

# 3200 SERIES



## Temperature/Process Controllers Specification Sheet

---

- **8 Segment programmer**
- **Heater failure detection**
- **Current monitoring**
- **Internal timer**
- **Scrolling text messages**
- **Recipes**
- **Modbus® comms**
- **Modbus SP retransmission**
- **Analogue retransmission**
- **Remote setpoint**
- **Help text**

The innovative range of 3200 controllers offer precision control of temperature and other process variables together with a host of advanced features not normally found in this class of controller.

The emphasis is on ease of use. A simple 'Quick Start' code is used to configure all the functions essential for controlling your process. This includes input sensor type, measurement range, control options, and alarms, making 'Out the Box' operation truly achievable. In operator mode every parameter has a scrolling text message describing its function and is available in English, German, French, Spanish or Italian. More advanced features are configured using iTools, a PC based configuration wizard which is an easy to use and instructive guide to all the functions in the controller.

### **Heater current monitoring**

A current transformer input provides display of the heater current and a health check on the load. Partial load failure, heater open circuit and SSR faults are detected and displayed as scrolling alarm messages as well as providing an alarm output. On the 3208 and 3204 a front panel ammeter displays the heater current.

### **Setpoint programmer**

Heat treatment profiles can be programmed using the 8-segment programmer. Holdback, at the beginning of each segment can be used to guarantee the soak periods. A digital event output can be triggered in any segment to initiate actions within the process.

### **Custom text messaging**

Custom messages can be created with iTools and downloaded to the 3200 to display when an event, alarm or process condition occurs. This provides the operator with good visibility of the status of the process.

### **Remote setpoint**

An option exists for the 3200 to have a Remote Analogue Input. This can be either volts or mA and is used to allow the setpoint to be generated by a master controller or PLC.

## Recipes

Using iTools, recipes can be created that may be used to change the operating parameters of the 3200 simply by selecting a new recipe using the 3200 HMI. This is very useful where multiple products are processed using the same controller but require different parameters to be set.

## Timer

An internal timer is configurable as an interval timer, delay timer or to provide a soft start for hot runner control.

## Setpoint retransmission

Sending the setpoint or other parameters from the 3200 to slave devices can be achieved either using conventional analogue communications or using Master Modbus communications. Master Modbus in the 3200 allows a broadcast of a single parameter to the network.

A typical application is a setpoint being retransmitted to a number of slave controllers in a multi-zone furnace.

## Modbus communications

All units support both EIA232 and 2-wire EIA485 communications using the Modbus protocol. The 3216 supports 4-wire EIA485.

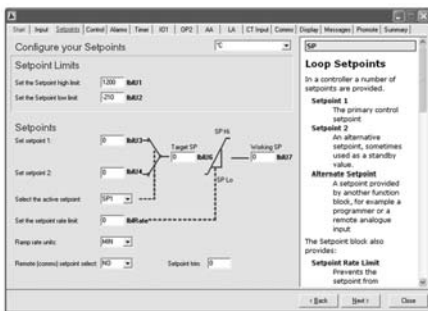
## Configuration adaptor

iTools configuration to all 3200 controllers can be achieved by using a configuration adaptor. It provides iTools with the ability to communicate with and configure devices without the need for any power being connected.



## iTools wizard

Used to simplify the set up of 3200 series controllers. The wizard guides the user through the configuration process with interactive help and graphical demonstrations of features.



## SPECIFICATION

### General

#### Environmental performance

Temperature limits	Operation:	0 to 55°C
	Storage:	-10 to 70°C
Humidity limits	Operation:	5 to 90% RH non condensing
	Storage:	5 to 90% RH non condensing
Panel sealing:		IP65, Nema 4X
Shock:		BS EN61010
Vibration:		2g peak, 10 to 150Hz
Altitude:		<2000 metres
Atmospheres:		Not suitable for use in explosive or corrosive atmosphere

#### Electromagnetic compatibility (EMC)

Emissions and immunity: BS EN61326

#### Electrical safety

(BS EN61010): Installation cat. II; Pollution degree 2

#### INSTALLATION CATEGORY II

The rated impulse voltage for equipment on nominal 230V mains is 2500V.

#### POLLUTION DEGREE 2

Normally, only non-conductive pollution occurs. Occasionally, however, a temporary conductivity caused by condensation shall be expected

### Physical

Panel mounting	3216:	1/16 DIN
	3208:	1/8 DIN
	3204:	1/4 DIN
	32h8:	1/8 DIN, horizontal
Weight	3216:	250g
	3208:	350g
	3204:	420g
	32h8:	350g
Panel cut-out dimensions	3216:	45W x 45Hmm
	3208:	45W x 92Hmm
	3204:	92W x 92Hmm
	32h8:	92W x 45Hmm
Panel depth	All:	90mm

### Operator interface

Type:	LCD TN with backlight
Main PV display:	4 digits, green
Lower display	3216, 3208, 3204: 5 character starburst, green
	32h8: 9 character starburst, green
Status beacons:	Units, outputs, alarms, active setpoint

### Power requirements

3216:	100 to 240Vac, -15%, +10%, 48 to 62 Hz, max 6W 24Vac, -15%, +10%. 24Vdc, -15% +20% ±5% ripple voltage max 6W
3208/h8/04:	100 to 240Vac, -15%, +10%, 48 to 62 Hz, max 8W 24Vac, -15%, +10%. 24Vdc -15% +20% ±5% ripple voltage max 8W

### Approvals

CE, cUL listed (file E57766), Gost, DIN 3440 (3216 only)  
Suitable for use in Nadcap and AMS2750D applications under Systems Accuracy Test calibration conditions

### Transmitter PSU (not 3216)

Rating:	24Vdc, >28mA, <33mA
Isolation:	264Vac double insulated

### Communications

Serial communications option:	Modbus RTU slave
Protocol:	Modbus RTU Master broadcast (1 parameter)
Isolation:	264Vac, double insulated
Transmission standard:	EIA232 or EIA485 (2 wire)

## Process variable input

Calibration accuracy:	<±0.25% of reading ±1LSD <sup>(1)</sup>
Sample rate:	4Hz(250ms)
Isolation:	264Vac double insulation from the PSU and communication
Resolution (µV):	<0.5µV with 1.6sec filter
Resolution (effective bits):	>17 bits
Linearisation accuracy:	< 0.1% of reading
Drift with temperature:	<50ppm (typical) <100ppm (worst case)
Common mode rejection:	48-62Hz, >-120dB
Series mode rejection:	48-62Hz, >-93dB
Input impedance:	100MΩ
Cold junction compensation:	>30:1 rejection of ambient change
External cold junction:	Reference of 0°C
Cold junction accuracy:	<±1°C at 25°C ambient
Linear(process) input range:	-10 to 80mV, 0 to 10V with 100KΩ/806Ω external divider module
Thermocouple types:	K, J, N, R, S, B, L, T, C, custom download <sup>(2)</sup>
Resistance thermometer types:	3-wire Pt100 DIN 43760
Bulb current:	0.2mA
Lead compensation:	No error for 22 ohms in all leads
Input filter:	Off to 59.9s
Zero offset:	User adjustable over full range
User calibration:	2-point gain & offset

### Notes

- (1) Calibration accuracy quoted over full ambient operating range and for all input linearisation types
- (2) Contact Eurotherm<sup>®</sup> for details of availability of custom downloads for alternative sensors

## AA relay

Type:	Form C (changeover)
Rating:	Min 100mA@12Vdc, max 2A@264Vac resistive
Functions:	Control outputs, alarms, events

## Current transformer input

Input range:	0-50mA rms, 48/62Hz, 10Ω burden resistor fitted inside module
Calibration accuracy:	<1% of reading (Typical), <4% of reading (Worst case)
Isolation:	By using external CT
Input impedance:	<20Ω
Measurement scaling:	10, 25, 50 or 100 Amps
Functions:	Partial load failure, SSR fault

## Digital input (DigIn A/B, B not on 3216)

Contact closure:	Open >600Ω, closed <300Ω
Input current:	<13mA
Isolation:	None from PV or system 264Vac double insulated from PSU and communications
Functions:	Includes alarm acknowledge, SP2 select, manual keylock, timer functions, standby select, RSP select

## Logic I/O module

### Output

Rating:	ON 12Vdc@<44mA, OFF <300mV@100µA
Isolation:	None from PV or system. 264Vac double insulated from PSU and communications
Functions:	Control outputs, alarms, events

### Digital input

Contact closure:	Open >500Ω, closed <150Ω
Isolation:	None from PV or system 264Vac double insulated from PSU and communications
Functions:	Includes alarm acknowledge, SP2 select, manual, keylock, timer functions, standby select, RSP select

## Relay output channels

Type:	Form A (normally open)
Rating:	Min 100mA@12vdc, max 2A@264Vac resistive
Functions:	Control outputs, alarms, events

## Triac output

Rating:	0.75A (rms) 30 to 264V(rms) resistive load
Isolation:	264Vac double insulated
Functions:	Control outputs, alarms, events

## Analogue output <sup>(3)</sup>

### OP1, OP2

Rating:	0-20mA into <500Ω
Accuracy:	± (<1% of Reading + <100µA)
Resolution:	13.5 bits
Isolation:	264Vac double insulated from PSU and communications Module code C provides full 264Vac double isolated Control outputs, retransmission

Functions:

### OP 3 (not on 3216)

Rating:	0-20mA into <500Ω
Accuracy:	±(<0.25% of Reading + <50µA)
Resolution:	13.6 bits
Isolation:	264Vac double insulated
Functions:	Control outputs, retransmission

## Remote setpoint input

Calibration accuracy:	<±0.25% or reading ±1LSD
Sample rate:	4Hz (250ms)
Isolation:	264Vac double insulation from instrument
Resolution:	<0.5mV (for 0-10V) or <2µA (for 4-20mA)
Resolution (effective bits):	>14bits
Drift with temperature:	<50ppm (typical) <150ppm (worst case)
Common mode refection:	48-62Hz, >-120dB
Series mode rejection:	48-62Hz, >-90dB
Input impedance:	Voltage: 223KOhm and Current: 2R49
Normal input range:	0 to 10V and 4 to 20mA
Max input range:	-1V to 11V and 3.36mA to 20.96mA

## Software features

### Control

Number of loops:	1
Loop update:	250ms
Control types:	PID, ON/OFF, VP
Cooling types:	Linear, fan, oil, water
Modes:	Auto, manual, standby, forced manual
Overshoot inhibition:	High, low

### Alarms

Number:	4
Type:	Absolute high & low, deviation high, low or band, rate of change
Latching:	Auto or manual latching, non-latching, event only
Output assignment:	Up to four conditions can be assigned to one output

### Other status outputs

Functions:	Including sensor break, manual mode, timer status, loop break, heater diagnostics, program event
Output assignment:	Up to four conditions can be assigned to one output

### Setpoint programmer

Program function:	1 program x 8 segments with 1 event output <sup>(4)</sup>
Start mode:	Servo from PV or SP
Power fail recovery:	Continue at SP or Ramp back from PV
Guaranteed soak:	Inhibits dwell timing until PV within limits

### Timer

Modes	Dwell when setpoint reached Delayed control action, Soft start limits power below PV threshold
-------	--

### Current monitor

Alarm types:	Partial load failure, over current, SSR short circuit, SSR open circuit
Indication type:	Numerical or ammeter

### Custom messages

Number:	15 scrolling text messages
No of characters:	127 characters per message max
Languages:	English, German, French, Spanish, Italian
Selection:	Active on any parameter status using conditional command

### Recipes

Number:	5 recipes with 38 parameters
Selection:	HMI interface, communications or digital IO

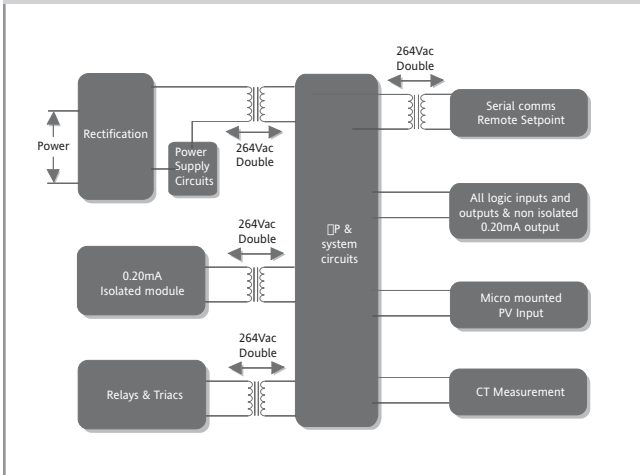
### Notes

(3) Voltage output can be achieved by external adaptor

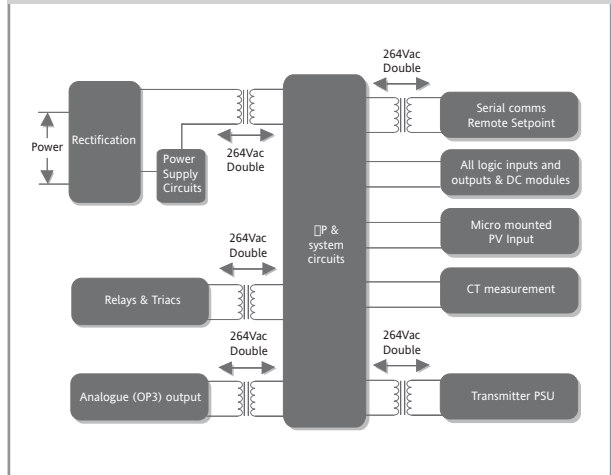
(4) By using recipes five SP programs can be stored

## Isolation diagrams

3216

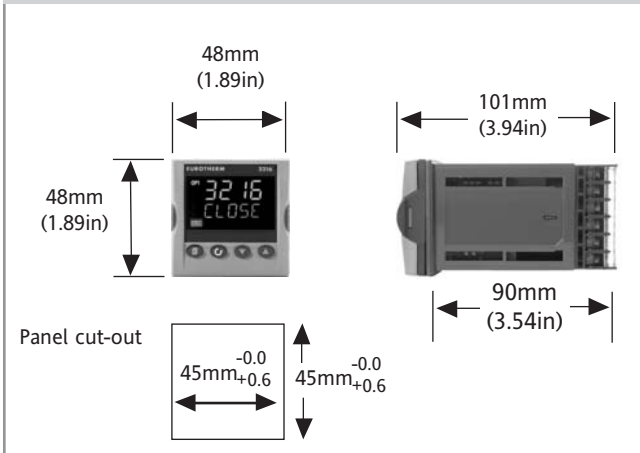


3208/h8/04

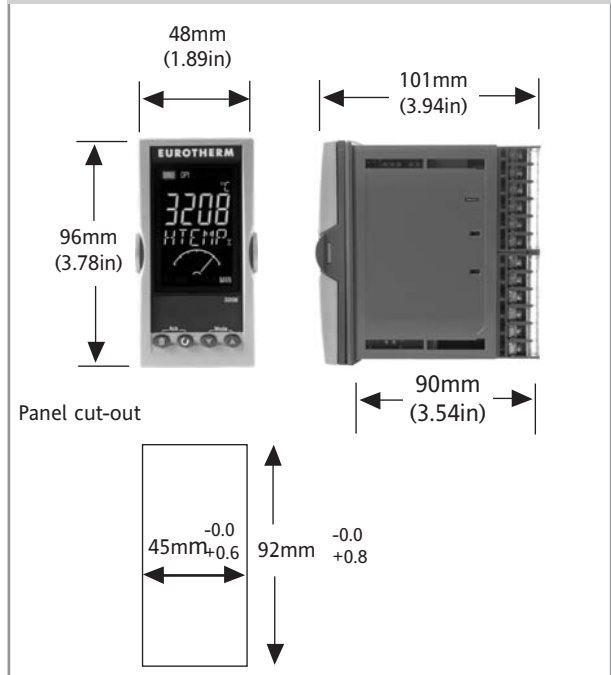


## Dimensional details

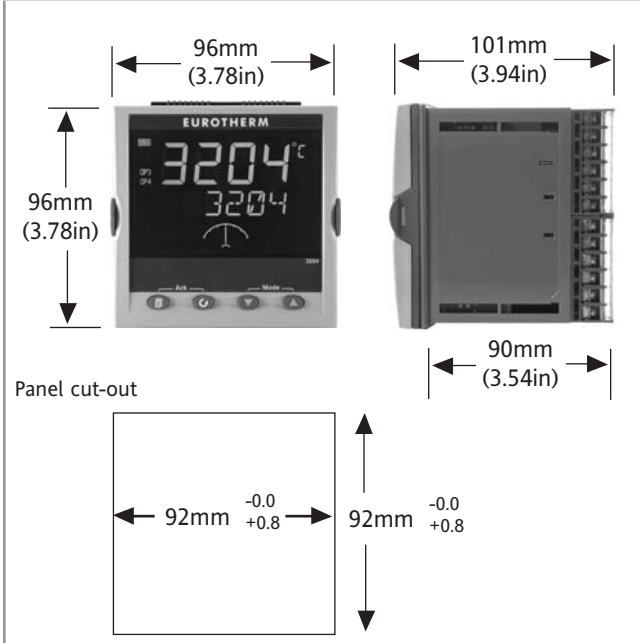
3216



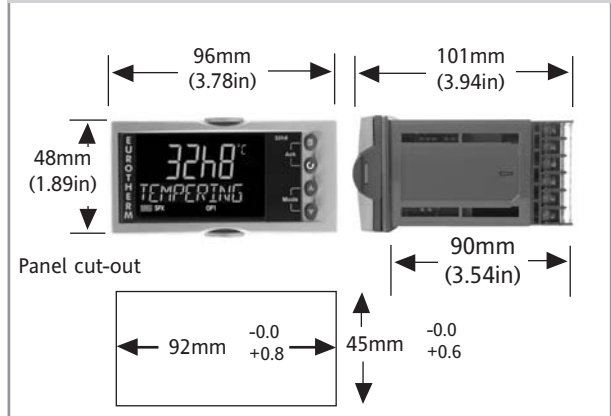
3208



3204



32h8



## Ordering code

Model Number	Function	Power Supply	OP1	Outputs OP2	OP3	AA Relay	Options	Fascia Colour	Product Language	Manual Language	Warranty	Calibration Certification	Custom Label	Specials & Accessories

### Model Number

<b>3216</b>	1/16 DIN unit
<b>3208</b>	1/8 DIN vertical unit
<b>32h8</b>	1/8 DIN horizontal unit
<b>3204</b>	1/4 DIN unit

### Function

<b>CC</b>	Controller
<b>CP</b>	Programmer
<b>VC</b>	Valve
<b>VP</b>	Valve Programmer

Where  
 L = Logic,  
 R = Relay,  
 D = 0-20mA,  
 C = Isolated 0-20mA  
 T = Triac  
 X = Not fitted

### Power Supply

<b>VH</b>	85 - 264Vac
<b>VL</b>	24Vac/dc

### 3216 OP1, OP2

	OP1	OP2		
L	X	X	X	
L	R	X	X	
R	R	X	X	
L	L	X	X	
L	D	X	X	
D	D	X	X	
D	R	X	X	
R	C	X	X	
L	C	X	X	
D	C	X	X	
L	T	X	X	
T	T	X	X	

Not available with Low Voltage PSU

### 3208/h8/04 OP1, OP2, OP3

	OP1	OP2	OP3	
L	R	R	X	
R	R	R	X	
L	L	R	X	
L	R	D	X	
R	R	D	X	
D	D	D	X	
L	L	D	X	
L	D	D	X	
D	R	D	X	
L	T	R	X	
T	T	R	X	
L	T	D	X	
T	T	D	X	

Not available with Low Voltage PSU

### AA Relay

<b>X</b>	Disabled
<b>R</b>	Relay (Form C)

### Options

<b>XXX</b>	Not fitted
<b>RCL</b>	Remote SP, CT & Dig in A
<b>XCL</b>	CT & Dig in A
<b>2CL</b>	RS232, CT & Dig in A
<b>4CL</b>	RS485, CT & Dig in A
<b>2XL*</b>	RS232 Dig in A
<b>4XL*</b>	RS485 Dig in A
<b>6XX*</b>	4-wire RS485
<b>XXL*</b>	Dig in A

\* 3216 only

### Fascia Colour

<b>G</b>	Green
<b>S</b>	Silver
<b>W</b>	Washdown (not 32h8/04)

### Product Language

<b>ENG</b>	English
<b>FRA</b>	French
<b>GER</b>	German
<b>SPA</b>	Spanish
<b>ITA</b>	Italian

### Manual Language

<b>ENG</b>	English
<b>FRA</b>	French
<b>GER</b>	German
<b>SPA</b>	Spanish
<b>ITA</b>	Italian

### Warranty

<b>XXXXX</b>	Standard
<b>WL005</b>	Extended

### Calibration Certificates

<b>XXXXX</b>	None
<b>CERT1</b>	Certificate of Conformity
<b>CERT2</b>	Factory input calibration per input

### Custom Label

<b>XXXXXX</b>	None
---------------	------

### Specials and Accessories

<b>XXXXXX</b>	None
<b>RES250</b>	250R resistor for 0-5Vdc OP
<b>RES500</b>	500R resistor for 0-10Vdc OP

### Example (order code)

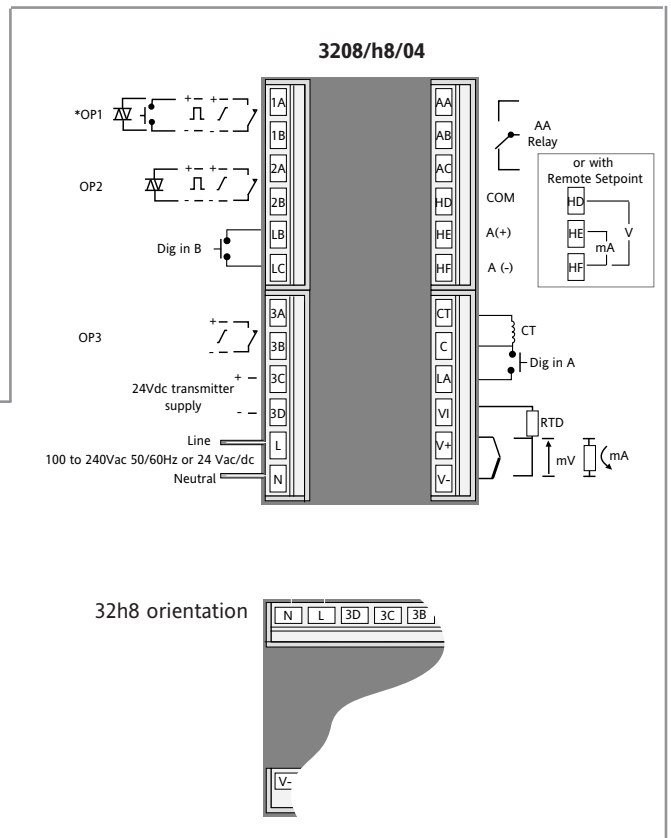
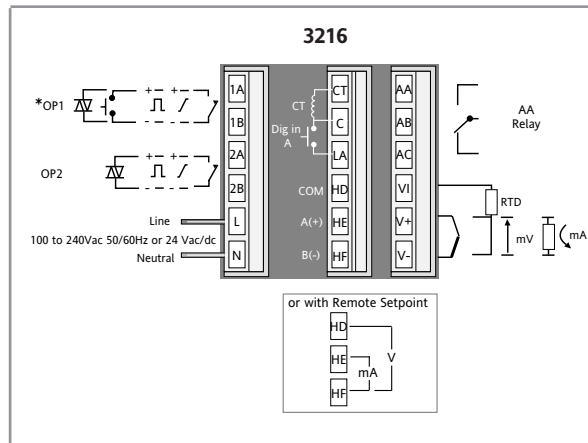
**3216/CP/VH/LDXX/R/4CL/S/ENG/ENG/WL005/XXXXX/XXXXX/RES250**

This code describes a 3216 controller with setpoint programmer, OP1 as Logic, OP2 as 0-20mA, AA Relay, RS485 Comms, CT Input, Dig In A, English language, 5 year warranty, resistor for 0-5V output

## 3200i Accessories

User guide	HA028582
Engineering manual	HA027986
2.49R Precision resistor	SUB35/ACCESS/249R.1
10A Current transformer	CTR100000/000
25A Current transformer	CTR200000/000
50A Current transformer	CTR400000/000
100A Current transformer	CTR500000/000
Configuration clip	iTools/None/3000CK
0-10V input adaptor	SUB21/IV10

## Rear terminals



## Optional quick start code

Input Type	Setpoint Limits	OP1	OP2	AA Relay	CT Input	Dig in A	Dig in B	OP3	Lower Display
							3208/h8/ 04 only	3208/h8/ 04 only	

Input Type	Setpoint Limits	OP1, OP2, AA Relay, OP3	CT Input	Lower Display
<b>Thermocouple</b> <b>B</b> Type B <b>J</b> Type J <b>K</b> Type K <b>L</b> Type L <b>N</b> Type N <b>R</b> Type R <b>S</b> Type S <b>T</b> Type T <b>C</b> Custom/Type C <b>RTD</b> <b>P</b> Pt100 <b>Linear</b> <b>M</b> 0-80mV <b>2</b> 0-20mA <b>4</b> 4-20mA <b>X</b> Unconfigured	<b>Temperature</b> <b>C</b> Deg C full range <b>F</b> Deg F full range <b>Centigrade</b> <b>0</b> 0 to 100 °C <b>1</b> 0 to 200 °C <b>2</b> 0 to 400 °C <b>3</b> 0 to 600 °C <b>4</b> 0 to 800 °C <b>5</b> 0 to 1000 °C <b>6</b> 0 to 1200 °C <b>7</b> 0 to 1400 °C <b>8</b> 0 to 1600 °C <b>9</b> 0 to 1800 °C <b>X</b> Unconfigured <b>Fahrenheit</b> <b>G</b> 32 to 212 °F <b>H</b> 32 to 392 °F <b>J</b> 32 to 752 °F <b>K</b> 32 to 1112 °F <b>L</b> 32 to 1472 °F <b>M</b> 32 to 1832 °F <b>N</b> 32 to 2192 °F <b>P</b> 32 to 2552 °F <b>R</b> 32 to 2912 °F <b>T</b> 32 to 3272 °F	<b>X</b> Unconfigured <b>Relay, Triac or Logic outputs</b> <b>Control</b> <b>H</b> Heat (PID) <b>C</b> Cool (PID) <b>J</b> Heat (On/off) <b>K</b> Cool (On/off) <b>Alarm output</b> <b>0</b> High alarm <b>1</b> Low alarm <b>2</b> Deviation high <b>3</b> Deviation low <b>4</b> Deviation band <b>Alarm output</b> <b>De-energised in alarm</b> <b>5</b> High alarm <b>6</b> Low alarm <b>7</b> Deviation high <b>8</b> Deviation low <b>9</b> Deviation band <b>DC outputs</b> <b>Control</b> <b>H</b> 4-20mA heating <b>C</b> 4-20mA cooling <b>J</b> 0-20mA heating <b>K</b> 0-20mA cooling <b>Retransmission</b> <b>D</b> 4-20mA setpoint <b>E</b> 4-20mA process value <b>F</b> 4-20mA output <b>N</b> 0-20mA setpoint <b>Y</b> 0-20mA process value <b>Z</b> 0-20mA output <b>Logic input</b> <b>W</b> Alarm acknowledge <b>M</b> Manual select <b>R</b> Timer/Prog Run <b>L</b> Keylock <b>P</b> Setpoint 2 select <b>T</b> Timer/prog reset <b>U</b> Remote SP select <b>V</b> Recipe 2/1 select <b>A</b> Remote up button <b>B</b> Remote down button <b>G</b> Time/prog run/reset <b>I</b> Timer/prog hold <b>Q</b> Standby select	<b>X</b> Unconfigured <b>1</b> 10 Amps <b>2</b> 25 Amps <b>5</b> 50 Amps <b>6</b> 100 Amps <b>Dig in A, Dig in B, OP1</b> <b>X</b> Unconfigured <b>W</b> Alarm acknowledge <b>M</b> Manual select <b>R</b> Timer/Prog Run <b>L</b> Keylock <b>P</b> Setpoint 2 select <b>T</b> Timer/prog reset <b>U</b> Remote SP select <b>V</b> Recipe 2/1 select <b>A</b> Remote up button <b>B</b> Remote down button <b>G</b> Time/prog run/reset <b>I</b> Timer/prog hold <b>Q</b> Standby select	<b>T</b> Working setpoint <b>S</b> Target setpoint <b>P</b> Output demand <b>R</b> Time to run <b>E</b> Elapsed time <b>1</b> Alarm setpoint <b>A</b> Load amps <b>D</b> Dwell/ramp - time/target <b>N</b> None

### Example (Quick Start) K/6/H/E/5/5/P/X/X/T

This code will provide a controller configured as 0-1200 °C, Type K, Heat Output, 4-20mA PV retrans, High Alarm, 50A CT measurement, SP select via Dig In A, Lower display showing working setpoint

## Eurotherm: International sales and service

Understanding and providing local support is a key part of Eurotherm's business. Complementing worldwide Eurotherm offices are a whole range of partners and a comprehensive technical support team... to ensure you get a service you will want to go back to.

**AUSTRALIA** Sydney  
Eurotherm Pty. Ltd.  
T (+61 2) 9838 0099  
F (+61 2) 9838 9288  
E [info.au@eurotherm.com](mailto:info.au@eurotherm.com)

**AUSTRIA** Vienna  
Eurotherm GmbH  
T (+43 1) 7987601  
F (+43 1) 7987605  
E [info.at@eurotherm.com](mailto:info.at@eurotherm.com)

**BELGIUM & LUXEMBOURG** Moha  
Eurotherm S.A./N.V.  
T (+32) 85 274080  
F (+32) 85 274081  
E [info.be@eurotherm.com](mailto:info.be@eurotherm.com)

**BRAZIL** Campinas-SP  
Eurotherm Ltda.  
T (+5519) 3707 5333  
F (+5519) 3707 5345  
E [info.br@eurotherm.com](mailto:info.br@eurotherm.com)

**DENMARK** Copenhagen  
Eurotherm Danmark AS  
T (+45 70) 234670  
F (+45 70) 234660  
E [info.dk@eurotherm.com](mailto:info.dk@eurotherm.com)

**FINLAND** Abo  
Eurotherm Finland  
T (+358) 22506030  
F (+358) 22503201  
E [info.fi@eurotherm.com](mailto:info.fi@eurotherm.com)

**FRANCE** Lyon  
Eurotherm Automation SA  
T (+33 478) 664500  
F (+33 478) 352490  
E [info.fr@eurotherm.com](mailto:info.fr@eurotherm.com)

**GERMANY** Limburg  
Eurotherm Deutschland GmbH  
T (+49 6431) 2980  
F (+49 6431) 298119  
E [info.de@eurotherm.com](mailto:info.de@eurotherm.com)

**HONG KONG & CHINA**  
Eurotherm Limited North Point  
T (+85 2) 28733826  
F (+85 2) 28700148  
E [info.hk@eurotherm.com](mailto:info.hk@eurotherm.com)

**Guangzhou Office**  
T (+86 20) 8755 5099  
F (+86 20) 8755 5831  
E [info.cn@eurotherm.com](mailto:info.cn@eurotherm.com)

**Beijing Office**  
T (+86 10) 6567 8506  
F (+86 10) 6567 8509  
E [info.cn@eurotherm.com](mailto:info.cn@eurotherm.com)

**Shanghai Office**  
T (+86 21) 6145 1188  
F (+86 21) 6145 1187  
E [info.cn@eurotherm.com](mailto:info.cn@eurotherm.com)

**INDIA** Chennai  
Eurotherm India Limited  
T (+91 44) 24961129  
F (+91 44) 24961831  
E [info.in@eurotherm.com](mailto:info.in@eurotherm.com)

**IRELAND** Dublin  
Eurotherm Ireland Limited  
T (+353 1) 4691800  
F (+353 1) 4691300  
E [info.ie@eurotherm.com](mailto:info.ie@eurotherm.com)

**ITALY** Como  
Eurotherm S.r.l.  
T (+39 31) 975111  
F (+39 31) 977512  
E [info.it@eurotherm.com](mailto:info.it@eurotherm.com)

**KOREA** Seoul  
Eurotherm Korea Limited  
T (+82 31) 2738507  
F (+82 31) 2738508  
E [info.kr@eurotherm.com](mailto:info.kr@eurotherm.com)

**NETHERLANDS** Alphen a/d Rijn  
Eurotherm B.V.  
T (+31 172) 411752  
F (+31 172) 417260  
E [info.nl@eurotherm.com](mailto:info.nl@eurotherm.com)

**NORWAY** Oslo  
Eurotherm A/S  
T (+47 67) 592170  
F (+47 67) 118301  
E [info.no@eurotherm.com](mailto:info.no@eurotherm.com)

**POLAND** Katowice  
Invensys Eurotherm Sp z o.o.  
T (+48 32) 2185100  
F (+48 32) 2177171  
E [info.pl@eurotherm.com](mailto:info.pl@eurotherm.com)

**SPAIN** Madrid  
Eurotherm España SA  
T (+34 91) 6616001  
F (+34 91) 6619093  
E [info.es@eurotherm.com](mailto:info.es@eurotherm.com)

**SWEDEN** Malmo  
Eurotherm AB  
T (+46 40) 384500  
F (+46 40) 384545  
E [info.se@eurotherm.com](mailto:info.se@eurotherm.com)

**SWITZERLAND** Wallerau  
Eurotherm Produkte (Schweiz) AG  
T (+41 44) 7871040  
F (+41 44) 7871044  
E [info.ch@eurotherm.com](mailto:info.ch@eurotherm.com)

**UNITED KINGDOM** Worthing  
Eurotherm Limited  
T (+44 1903) 268500  
F (+44 1903) 265982  
E [info.uk@eurotherm.com](mailto:info.uk@eurotherm.com)  
[www.eurotherm.co.uk](http://www.eurotherm.co.uk)

**U.S.A.** Leesburg VA  
Eurotherm Inc.  
T (+1 703) 443 0000  
F (+1 703) 669 1300  
E [info.us@eurotherm.com](mailto:info.us@eurotherm.com)  
[www.eurotherm.com](http://www.eurotherm.com)

ED53

© Copyright Eurotherm Limited 2007

Invensys, Eurotherm, the Eurotherm logo, Chessell, EurothermSuite, Mini8, Eycan, Eyris and Wonderware are trademarks of Invensys plc, its subsidiaries and affiliates. All other brands may be trademarks of their respective owners.

All rights are strictly reserved. No part of this document may be reproduced, modified, or transmitted in any form by any means, nor may it be stored in a retrieval system other than for the purpose to act as an aid in operating the equipment to which the document relates, without the prior written permission of Eurotherm limited.

Eurotherm Limited pursues a policy of continuous development and product improvement. The specifications in this document may therefore be changed without notice. The information in this document is given in good faith, but is intended for guidance only.

Eurotherm Limited will accept no responsibility for any losses arising from errors in this document.

Part No. HA028600 Issue 6

Printed in England 08.07